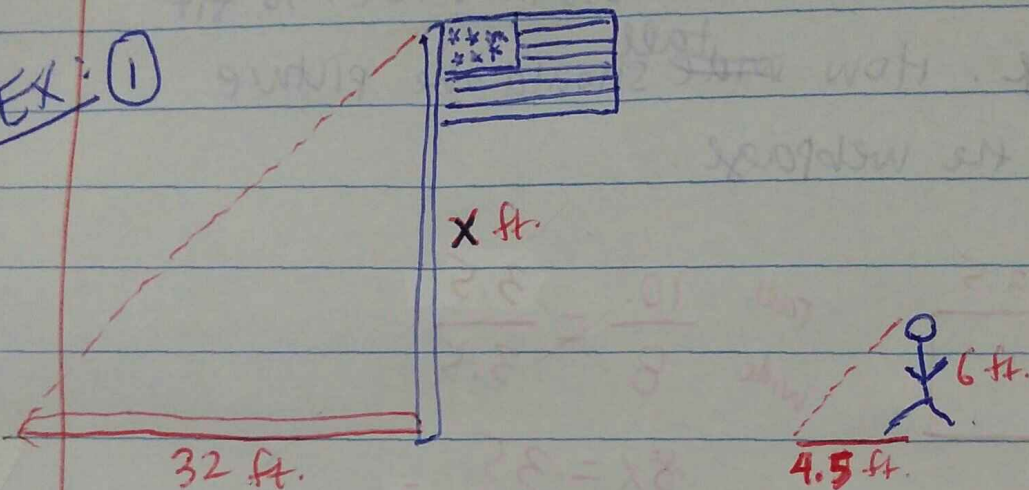


5.6

2/19/15 (1) I can use indirect measurement to find missing dimensions.

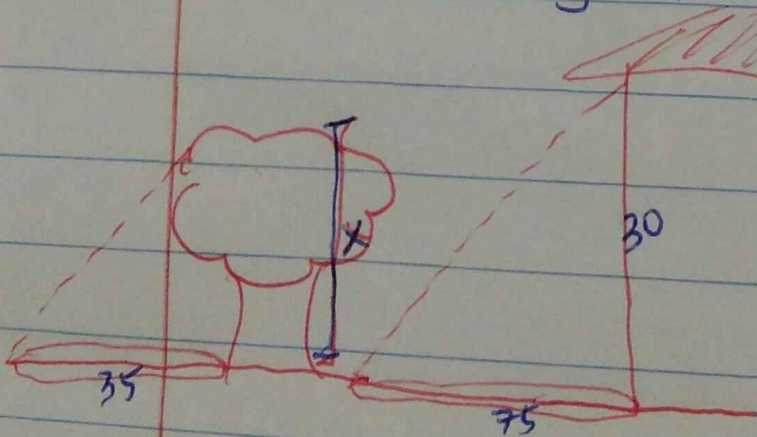
EX: (1)



Flagpole	32	<del>x</del>
Man	4.5	6

$$x = 42.\bar{6} \text{ ft.}$$

(2) A 30 ft. building casts a shadow that is 75 ft. long. A nearby tree casts a shadow that is 35 ft. long. How tall is the tree?



Tree	$\frac{x}{35}$
Building	$\frac{30}{75}$

$$x = 14 \text{ ft.}$$